

Celebrating 50 Years of Caring
1958 - 2008

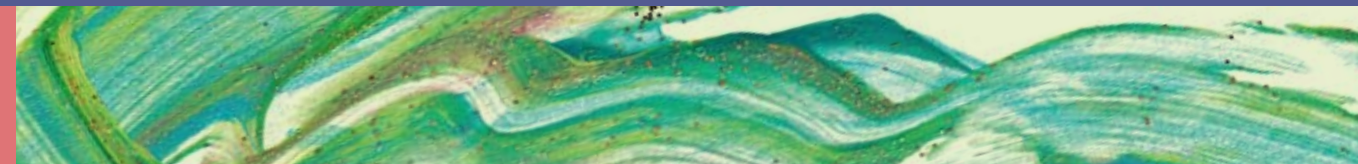
Our mission is to improve the abilities, interests and choices of children and adults with physical, developmental or behavioral challenges toward achieving their highest levels of self-sufficiency.

RCI, Inc.
1111 Menaul Blvd. NE
Albuquerque, NM 87107-1614
Phone: 505-255-5501
Fax: 505-255-9971
www.rci-nm.org



We make a living by what we get,
we make a life by what we give.

~Sir Winston Churchill



CONTENTS

Letter from the President & CEO

Milestones

Mission Accomplishments

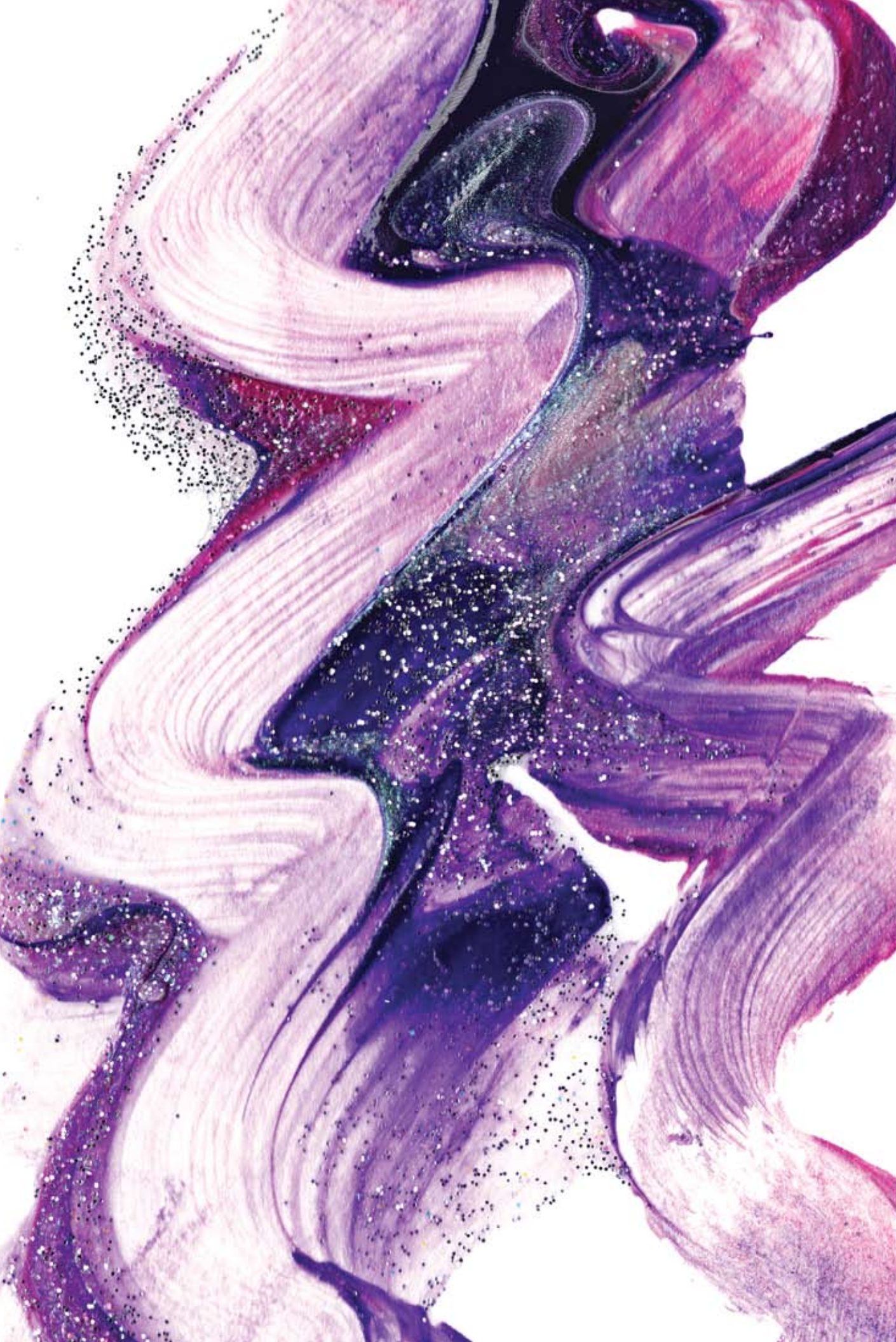
Financial Highlights

Donors & Contributors

Programs & Services

Ways to Give

Leadership



LETTER FROM THE PRESIDENT & CEO

Dear Friends of RCI:

This past year marked our 50th year of caring for and bringing hope to children and adults with disabilities. Over the years, RCI has grown from the first center in the state to treat children with polio and cerebral palsy to a multi-disciplinary facility offering state-of-the-art programs and services across all age groups. While RCI has recognized many changes over the years, one thing has remained constant; our philosophy of recognizing and supporting each individual's abilities rather than their disabilities and providing the highest quality services and attention to their specific needs.

I am pleased to report that as of the close of our fiscal year, June 30, 2009, RCI posted more than \$8 million in revenues; provided support and services to over 1,000 children, adults and families; and transitioned 150 children into the public school system. We were also able to continue to provide employment for people with disabilities through the various business partnerships we have with the government and other business leaders in our community.

RCI remains focused on strengthening its role in the community and to enhancing its programs and services in order to continue to address the needs of people with disabilities. With your help and support, this focus will serve to advance the organization into the next 50 years of operation.

On behalf of RCI's Board of Directors and staff, I would like to express my deep and sincere gratitude to our donors, volunteers, clients, and partners that contribute so generously to the programs and services we provide to the disabled in our community and for sharing in our mission in helping children and adults achieve independence and self-sufficiency. With your continued support we are truly making a difference in the lives of the individuals we serve.

Warmest regards,

A handwritten signature in black ink, reading "Angela Vigil". The signature is fluid and cursive, with the first name and last name clearly distinguishable.

Angela Vigil
President and CEO



Milestones

The milestones are intended to offer a snapshot of RCI's accomplishments over the past year as well as give an idea of the organization's growth and expansion within the community.

During the 2008-2009 fiscal year, RCI:

- Celebrated its 50th anniversary with a gala attended by over 200 people at the Hilton Albuquerque on September 27.
- Held the first annual Caring Hands Awards© which honored state and local leaders who have championed and supported issues effecting those individuals with disabilities.
- Received a grant in the amount of \$15,000 from the Albuquerque Rotary Charitable Foundation for the planned development of a new Therapeutic/Educational/ Sensory Room.
- Received a grant in the amount of \$3,000 from the Del Norte Rotary Foundation for the expansion of our Literacy Program.
- Received a grant in the amount of \$90,000.00 from the United Way of Central New Mexico for the Early Intervention Program to increase self-sufficiency for at risk children and families.
- Received a gift of unrestricted funds in the amount of \$5,000 from the Albuquerque Rotary Charitable Foundation.
- Continued partnership with Ethicon Endo-Surgery a Johnson & Johnson Company, Family Magazine, Southern Wine and Spirits, SupplyOne Albuquerque Inc., and TriCore Laboratories to provide employment opportunities to our clients.
- Collaborated with community leaders to better serve persons with disabilities.
- Strengthened our partnership with NISH/Ability One to enhance our Federal Contracts at Kirtland Air Force Base and the Pete V. Domenici Federal Courthouse.
- Became a member of New Mexico Abilities to expand our quality services to state agencies and provide more job opportunities to persons with disabilities.



Mission Accomplishments

Children's and Therapy Services

- Served 997 children/families
- Transitioned over 150 children into Albuquerque Public Schools
- Partnered with outside early educational agencies (such as Head Start and various daycare facilities) successfully integrating early intervention services in community calsses.
- Served a larger number of children/families in the Hispanic popultaion with bilingual support services

Community Services

- Increased the number of individuals served (195 to 255)
- Identification of Future Rio Rancho Facility

Federal Contracts

- Secured renewal of the Federal Courthouse Contract with a 4% increase
- Received commendable rating on DSS Security Review
- Passed AbilityOne Compliance Review

Quality Assurance

- Established QA Plans for RCI, Inc. and its key contractors, Kirtland Air Force Base and the U.S. Federal Courthouse.
- Initiated a staff Quality Assurance Committee
- Administered annual surveys to customers, parents, and guardians in both the Children and Therapy and Community Services Department.



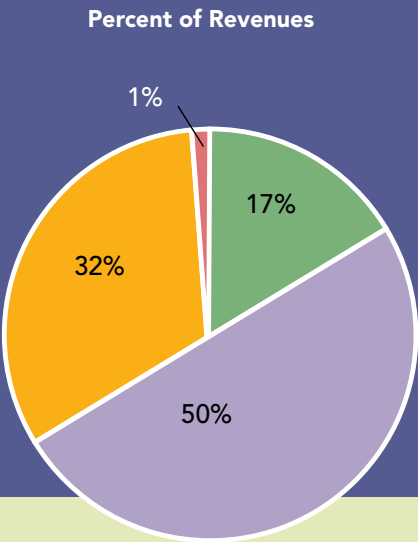


Financial Highlights

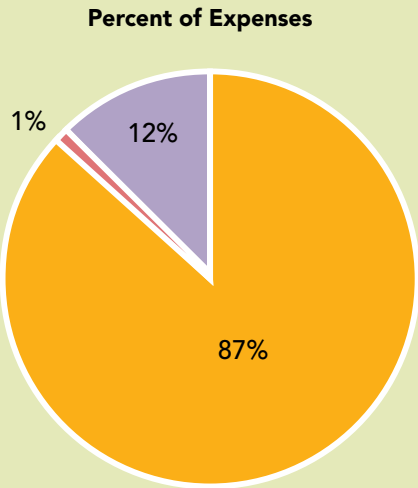
Statement of Activities for year ending June 30, 2009.

| Revenues | Amount |
|----------------------|--------------|
| State Contracts | 1,365,438.00 |
| Federal Contracts | 4,038,036.00 |
| Program Service Fees | 2,643,330.00 |
| Contribution/Grants | 121,439.00 |
| Other | |
| TOTAL | 8,168,243.00 |

| Expenses | Amount |
|--------------------------|--------------|
| Program Services | 7,100,290.00 |
| Supporting Services | 18,797.00 |
| General & Administrative | 1,200,431.00 |
| TOTAL | 8,319,518.00 |



- State Contracts
- Contributions/Grants
- Program Service Fees
- Federal Contracts



- Program Services
- Supporting Services
- General/Administrative

Donors & Contributors

THANK YOU! RCI Inc. thanks all those who contributed to the organization this past year. With your generous support we are able to provide the programs and services so essential to children and adults with disabilities. In addition, we thank everyone that helped RCI celebrate its Golden Anniversary, as well as those who attended the event!

Bank of America
Brady Industries
Carol Guerra – Insurance One
Events Plus!
Jeffrey Doll, CFM - Merrill Lynch
John and Millie McMahon - First Santa Fe
Insurance Services
Lovelace Health Plan
Merrill Lynch
NCA Architect Planners
NM Geeks
New Mexico Mutual
Paul and Shiela DiLorenzo
PayDay, Inc.
Rodey Law Firm
Advanced Security Alarms
Albuquerque Isotopes
Albuquerque the Magazine
Angela and Larry Vigil
Belleza MedSpa
Bernina Sewing Center
Borders
Bradbury Stamm Construction
Buffalo Thunder Resort
Charlott Motter
Debbie and Anthony Valdez
Dion's Pizza - Peter Defries Corporation
Discount Printing
Farmer's Feed
Four Hills Country Club
Fresquez Productions
Giggles the Clown
Golf New Mexico
Gwen Kiwanuka
Hilton Albuquerque Hotel
Hinkle Family Fun Center
Jane Butel Cooking School
Jason Cordova
Judit and Roger Alvernaz

Karen Velasquez
La Puerta Originals
- Melissa & Scott Coleman
Laura Chambliss
Marissa Armijo
Mary Salazar Jewelry
Michael Schwegler
Miller Bonded, Inc.
New Mexico Net Guide, LLC
- James Morrison
NM Jazz Workshop
O'Neills Pub
Palms Trading Company
Patrick Arrellin
Peter Garduno
Richardson & Richardson, Inc.
Saturday's Child Photography
Sonrisa Blooms
Starlyn Brown
Tara Massarsky
Valerie Roybal
WineShop at Home
Zlotnick, Laws and Sandoval, P.C.
Fox, Susan
Sydow, Christine
York, Wayne
DiLorenzo, Sheila and Paul
Ford, Weldon and Encarna
Kruger, Julie
Leith, David and Melinda
Meyners + Company, LLC
Nelson, James and Ann
Sydow, Christine



RCI PROGRAMS & SERVICES

At RCI we focus on the individual and their specific needs, it is a cornerstone of our programs and services. Our clients have access to quality education, training, medical care and other support necessary to advance toward his/her personal goals. Services are designed to assure opportunities to participate in community life and assume civic responsibilities, and to have opportunities for relationships with family and friends.

Early Childhood Intervention, Adult Services & Business Support

EARLY CHILDHOOD INTERVENTION SERVICES

Early Childhood Intervention (ECI) helps children and toddlers, birth to age 3, with disabilities or delays in their development and supports families through education and family services to help their children reach their potential. RCI's ECI support and services are designed to meet the full range of developmental needs of each child according to their strengths and weaknesses. Our ECI program builds upon the natural learning opportunities that occur within the daily routines of a child and their family.

At RCI, families and staff work as a team to develop a plan outlining services for the child and family. Most services are provided in the home or community to help children learn the basic skills that are a part of their family's daily routines.

RCI's Support and Services for children include:

- Screenings and assessments, including hearing and vision
- Developmental services
- Physical, occupational, speech and language therapy
- Activities to develop learning and eating skills
- Activities to help social and emotional development assistive technology
- Transition in to school or other services as needed at age 3 or when graduating from the program
- Nutritional services
- Supporting child care or preschool teachers of enrolled children

RCI's Services for families include:

- Education and counseling
- Coordination of needed social and health services
- Access to support groups

ADULTS SERVICES

RCI's Adult Programs provides individuals with disabilities ages 18(+) comprehensive support and services in a manner consistent with their future goals and specific needs. Our support and services for adults are available in Bernalillo, Sandoval, and Torrance counties.

Our Adult Programs Offer

- Service Coordinators whose focus is concentrated on the needs of the person with a quick response to those needs.
- 100% support to help realize successful outcomes for our individual's Meaningful Day. We work closely with case managers and therapists to enable our individuals to strive successfully towards their personal dreams.
- A high frequency of community activities that is fun and productive. These activities help forge bonds and positive relationships with the community.

- Supported entrepreneurship to support those individuals who would like to be self-employed and assisting them in their personal and professional dreams.
- Elective participation in all supports and services determined by the needs of the individual.
- Opportunity to enhance literacy and continuing educational skills that parallel individualized expectations in a person centered educational curriculum where students design, develop and manage career choices.
- "Employment First" initiative for all individuals served.

BUSINESS SUPPORT SERVICES THE PERFECT PARTNER

RCI provides state and federal entities and local businesses with workforce solutions tailored to meet their needs. We can help organizations cut cost while strengthening their bottom line. RCI provides innovative, cost-effective and quality services to enhance your programs and meet your staffing challenges. Best of all, we guarantee your job is completed to your expectations.

We take great pride in our ability to provide a superior job and to help our workers who have a disability become productive contributing members of our community. Needs we can fill:

- Janitorial Services
- Call Center Support & Operation
- Grounds Maintenance
- Packaging & Assembly
- Mail House Services
- Shipping & Receiving
- Warehousing
- Clerical Services



WAYS TO GIVE

You Make the Impossible Possible

RCI can't achieve its mission without your support. Donations from private individuals, foundations and companies will be put to good use in the promotion of RCI's mission and goals. There are many ways in which you can have a real impact on the lives of children and adults with disabilities. Your monetary contributions in any amount have a ripple effect: they show public support of our programs and services and this in turn creates awareness of the issues faced by children and adults with disabilities leading to greater assistance for those most in need. If you want your gift to go to a specific program or service, please let us know when you make your donation. Or you can make a gift of your time and show your support for RCI by volunteering. With your help and support, together we can make miracles happen.

In-Kind Donations

Your donations of office equipment, children's toys, art supplies, professional services, event tickets, dinner coupons, store gift cards, and other items allow RCI to utilize more of its financial resources in support of the programs and services we provide to the disabled community.

Planned Giving

Leave a lasting legacy that will help RCI fulfill its mission into the future. Planned giving allows you to plan your estate resources to serve your family and the charitable organizations you care about most after your death. Although there are literally hundreds of ways to plan gifts, the most common is to stipulate a bequest in your will. Bequests are perhaps the simplest manner in which to leave your legacy with RCI.

How to Make Your Donation

Making a donation or charitable contribution is easy and will take just a few minutes to make a lasting impression:

1. Visit our web site at www.rci-nm.org to download a donation form.
2. Email a completed Donation Form to RCI at markm@rci-nm.org
3. Mail your completed Donation Form and payment to
RCI Inc.
Attn: RCI Donations
1111 Menaul Blvd. NE
Albuquerque, NM 87107
4. Fax your completed Donation Form and payment to 505-255-9971

RCI Leadership

RCI Inc. Board of Directors

OFFICERS

Linda Geiszler
Board Chair

Susan Fox, Ph.D.
Vice Chair

Carol Guerra
Secretary

BOARD MEMBERS

Carol Rickert-Asbury
Sandra Beerle, Esq.
Starlyn Brown
Jane Butel
Catherine Salazar
Myron Saldyt
Joan Schofield

Executive Team

Angela Vigil
President & CEO

Karen Lucero
Director of Children's & Therapy Services

Gwen Kiwanuka
Director of Community Services

David Griffis
Director of Federal Contracts & FSO

Deborah Kubler
Director of Finance

Maria Chadwick
Director of Human Resources

Mark Maner
Director of Marketing & Communications

Michael Schwegler, Ph.D.
Director of Quality Assurance