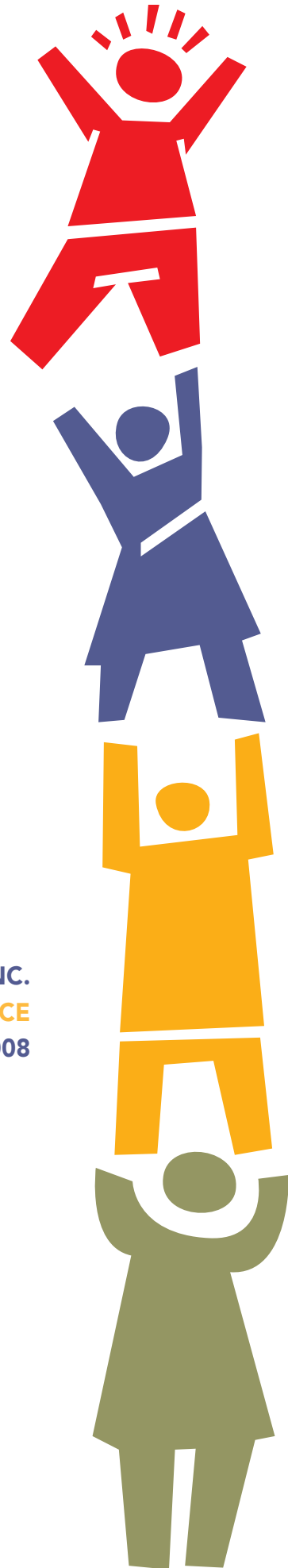


RCI INC.
REALIZING CONFIDENCE & INDEPENDENCE
ANNUAL REPORT 2007-2008



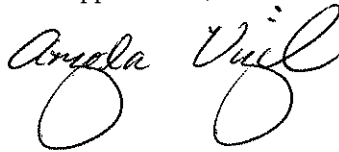
LETTER FROM THE
PRESIDENT & CEO

Dear Friends of RCI,

On behalf of RCI, Inc, I am pleased to present this Annual Report on the organization's 2007/2008 fiscal year initiatives and accomplishments. As you will see from the many highlights in the following pages, RCI, Inc. continues to make significant progress in our mission: "To improve the abilities, interests and choices of children and adults with physical, developmental or behavioral challenges toward achieving their highest levels of self-sufficiency." Every day, RCI, Inc. provides quality programs and services that through its dedicated staff, empower disabled individuals to overcome obstacles that might otherwise keep them from recognizing their independence and their ability to succeed with confidence in their quest toward achieving their dreams.

RCI, Inc. would not be able to accomplish all that it does without all of our supporters who share our mission, vision, and values for improving the lives of people with disabilities. Thanks to all of you who dedicate your time, energy, financial resources and commitment to providing help and creating hope for people with disabilities. Our successes are only possible because of your generosity. Together, we are making a difference!

With appreciation,



Angela M. Vigil
President and CEO



MILESTONES

The milestones listed below are intended to offer a snapshot of RCI's accomplishments over the past year as well as give an idea of the organization's growth and expansion within the community.

During the 2007-2008 fiscal year, RCI:

- Received Governors Commission on Disability Grant for \$8,000 to enhance the Career Discovery Program.
- Established a comprehensive training program for clients and staff at Kirtland Air Force Base.
- Participated in the Albuquerque Public Schools Transition Fairs helping institute related programs at Rio Grande and El Dorado High Schools in a normalized, functional environment offered by the University of New Mexico campus.
- Initiated and increased the referrals from the Commission of the Blind for needed services.
- Developed new curriculums for Literacy and Career Discovery Programs.
- Met with 100% compliance the newly established Meaningful Day Standards established in January 2007, within a mere three month period at both the Menaul and Rio Rancho Adult Habilitation Centers.
- Received a \$5,000 grant from the Del Norte Rotary Foundation for the Career Discovery Program. The monies were utilized to purchase a curriculum titled, "Supported Employment – From Start to Finish."
- Implemented Green Product technology at all Federal facilities to meet national guidelines and standards for excellence.
- The Rio Rancho Adult Habilitation Center Developed and implemented a lucrative greeting card business that displays the talents of the adult Habilitation participants.
- Implemented an assembly work contract with SupplyOne Inc. for client participation.
- Expanded the Southern Wine & Spirits contract to include more client employment.
- Helped establish criteria for the State Use Law, effective in 2008.
- Awarded \$25,000 by the Albuquerque Rotary Foundation.
- Received \$90,000 from the United Way of Central New Mexico for Early Childhood Intervention programs.
- Established community collaborative meetings with FIT providers in the greater Albuquerque metropolitan area to develop strategies to better serve children and families in the community.
- Developed and established a new child screening site at the University Child Care Program.
- Expanded the number of classrooms at Head Start Programs and within ten private preschools.
- Developed a comprehensive quality assurance program to meet and exceed Department of Health standards and recommendations.





DONORS &
CONTRIBUTORS

RCI offers its sincere thanks to all of our donors for their contributions toward our mission. With your generous support we are able to provide the programs and services so essential to children and adults with disabilities.

D.G. and Clara Trujillo
W.G. Horton
Barbara Hitch
Bill Halverson
Howard Sheffield
Susan Fox
Diana Barasch
Elmer Villarreal
John and Millie McMahon
UNM Contributors
Linda Geiszler
Elmer Villarreal
Sheila and Paul DiLorenzo
Shirley Starks
Earl Blankenship
Judit Alvernaz-Nagy
Art Gallery 66
Lillian Snyder
Daniel and Jennifer Cordova
Gregory & Debra Jackson
Joan Schofield
Carol Guerra
Camille Koehler, Esq.
Sandra Beerle
Myron Saldyt
Starlyn Brown
Sonja and Kevin Adams
Arabella and Sylvia Padilla
McCool Family
Elizabeth Martinez
Monica Martinez
Dale Jones and Family
Valerie Borrego
Richard Clarahan
David & Michelle Adams
Gwen Kiwanuka
John Bonner
Efren Sanchez, Jr.
Kathy Mack
Mary Miglionico
Susan R. Roman
Karen Lucero
Kat McKelvey

Frank Gaona
Annie Gallacher-Ramirez
Michelle Chavez
Tory Burns
John & Carmen Silva
Patricia Casaus
Un Suk Lovato
Evelyn Lopez
Tim Fresquez
Jackie Sanchez
Garrett Bennett
Angela Lovato
Donna J. McKernan
Kristi Edwards
Teresa Drake
Gia Scarpetta
Sandy Skaar
Richard Clarahan
Gloria Miera
Rebecca Bulgrin
Wayne York
Christine Sydow
Elizabeth Vedder
Larry & Angela Vigil
Michael Gelman
Frederick Family
Dale Jones
Dave McDowell

FINANCIAL
HIGHLIGHTS

Statement of Activities for year ending June 30, 2008.

Revenues

State Contracts	\$ 807,834
Federal Contracts	\$ 3,675,259
Program Service Fees	\$ 2,904,580
Contributions/Grants	\$ 113,425
Other	\$ 3,993

TOTAL **\$ 7,505,091**

Expenses

Program Services	\$ 6,454,274
Supporting Services	\$ 5,700
General & Administrative	\$ 1,097,744

TOTAL **\$ 7,557,718**



WAYS TO GIVE

You Make the Impossible Possible

RCI can't achieve its mission without your support. Donations from private individuals, foundations and companies will be put to good use in the promotion of RCI's mission and goals. There are many ways in which you can have a real impact on the lives of children and adults with disabilities. Your monetary contributions in any amount have a ripple effect: they show public support of our programs and services, and this in turn creates awareness of the issues faced by children and adults with disabilities, which leads to greater assistance for those most in need. If you want your gift to go to a specific program or service, please let us know when you make your donation. Or you can make a gift of your time and show your support for RCI by volunteering. With your help and support, together we can make miracles happen.

In-Kind Donations

Your donations of office equipment, children's toys, art supplies, professional services, event tickets, dinner coupons, store gift cards, and other items allow RCI to utilize more of its financial resources in support of the programs and services we provide to the disabled community.

Planned Giving

Leave a lasting legacy that will help RCI fulfill its mission into the future. Planned giving allows you to plan your estate resources to serve your family and the charitable organizations you care about most after your death. Although there are literally hundreds of ways to plan gifts, the most common is to stipulate a bequest in your will. Bequests are perhaps the simplest manner in which to leave your legacy with RCI.

How to Make Your Donation

Making a donation or charitable contribution is easy and will take just a few minutes to create a lasting impression:

1. Visit our web site at www.rci-nm.org to download a Donation Form.
2. Email a completed Donation Form to RCI at Markm@rci-nm.org

OR

3. Mail your completed Donation Form and payment to
RCI Inc.
Attn: RCI Donations
1111 Menaul Blvd. NE
Albuquerque, NM 87107

OR

4. Fax your completed Donation Form and payment to 505-255-9971



RCI LEADERSHIP

Board of Directors **July 1, 2007 – June 30, 2008**

OFFICERS

Linda J. Geiszler	Chair
Susan Fox, PhD., R.N.	Vice Chair
Carol Guerra	Secretary
Camille Koehler, Esq.	Treasurer

BOARD MEMBERS

Carol Rickert-Asbury
Myron Saldyt
Joan Schofield
Catherine Salazar
Sandra L. Beerle, Esq.
Starlyn Brown
Rick Fairbanks

Executive Team

Executive Officer	Angela Vigil President & CEO
-------------------	---------------------------------





Our mission is to improve
the abilities, interests and choices
of children and adults with physical,
developmental or behavioral challenges
toward achieving their highest levels
of self-sufficiency.